

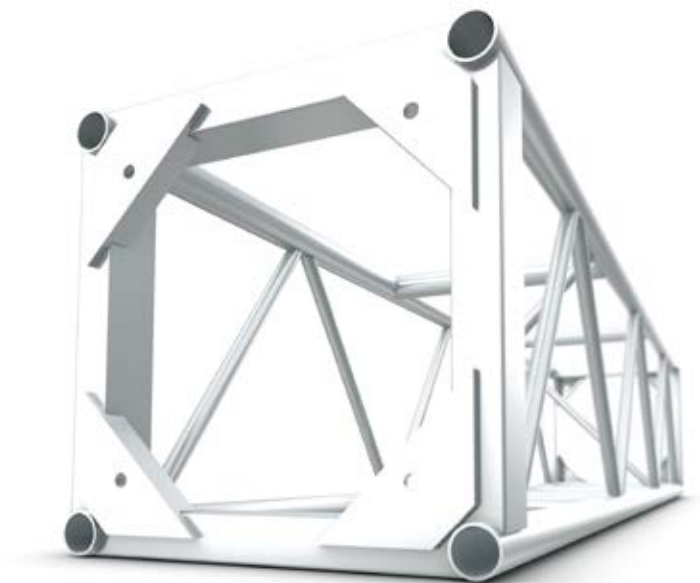
# Box truss

Core truss 20.5 x 20.5 plated

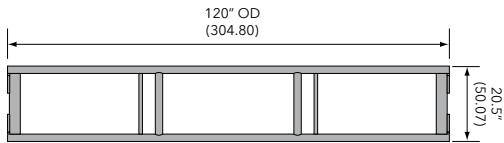


## Core truss 20.5 x 20.5 plated

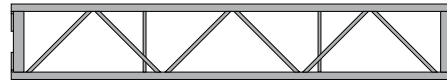
- › Standard lengths are 10', 8' and 5'
- › Custom lengths available upon request
  
- › Equipped with bolts
- › Main chords are 2" OD x 1/8" aluminum
- › Diagonals are 1" OD x 1/8" aluminum
- › Fabricated by AWS/SFL certified welders



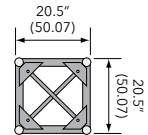
## PLAN VIEWS



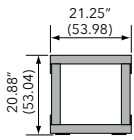
PLAN



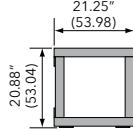
ELEVATION



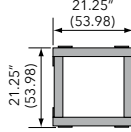
END VIEW



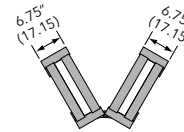
2-WAY CORNER BLOCK



3-WAY CORNER BLOCK



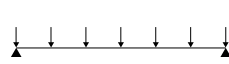
4-WAY CORNER BLOCK



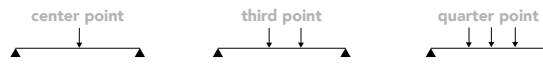
HORIZONTAL VARIABLE CORNER

**Note:** Corners are same as Light Duty Truss

### MAXIMUM ALLOWABLE UNIFORM LOADS



### MAXIMUM ALLOWABLE POINT LOADS



NO. OF SECTS.	SPAN FT (MTRS)	MAXIMUM ALLOWABLE UNIFORM LOADS			MAXIMUM ALLOWABLE POINT LOADS					
		LOAD LBS/FT	LOAD LBS (KGS)	MAX DEFL. IN.	center point		third point		quarter point	
					LOAD LBS (KGS)	MAX DEFL. IN.	LOAD LBS (KGS)	MAX DEFL. IN.	LOAD LBS (KGS)	MAX DEFL. IN.
1	10 (3.05)	620	6200 (2812)	0.06	5289 (2404)	0.09	3101 (1410)	0.09	2068 (940)	0.08
2	20 (6.09)	306	6120 (2776)	0.52	2925 (1330)	0.40	2074 (942.7)	0.48	1611 (732.3)	0.52
3	30 (9.14)	142	4260 (1932)	1.25	1927 (875.9)	0.92	1424 (647.3)	1.15	1061 (48.3)	1.19
4	40 (12.19)	76	3040 (1379)	2.22	1278 (580.9)	1.56	993 (451.4)	2.00	722 (328.2)	2.02
5	50 (15.24)	44	2200 (998)	3.29	1066 (484.5)	2.70	752 (341.8)	3.15	549 (249.5)	3.20
6	60 (18.29)	22	1320 (599)	4.02	655 (297.7)	3.38	424 (192.7)	3.62	316 (143.6)	3.72

5/8" diameter Grade 8 Bolts with standard washers through 3/8" gusset plates

**Note:** Deflections reported in the tables on the left are the maximum expected for full loadings (indoors only). All loads are based on 10' (3.05 m) sections. Other section lengths are available. Load tables are reprinted from engineering reports developed by Theta Consulting and apply to truss fabricated after March 2009.

### CORE TRUSS 20.5 X 20.5 PLATED CONNECTIONS ARE SINGLE SETS OF BOLTS

PRODUCT DESCRIPTION	ITEM CODE	WEIGHT LBS (KGS)
5 FT MEDIUM DUTY PLATED TRUSS	TC C2020-060B	45 (20)
8 FT MEDIUM DUTY PLATED TRUSS	TC C2020-096B	61 (28)
10 FT MEDIUM DUTY PLATED TRUSS	TC C2020-120B	69 (31)